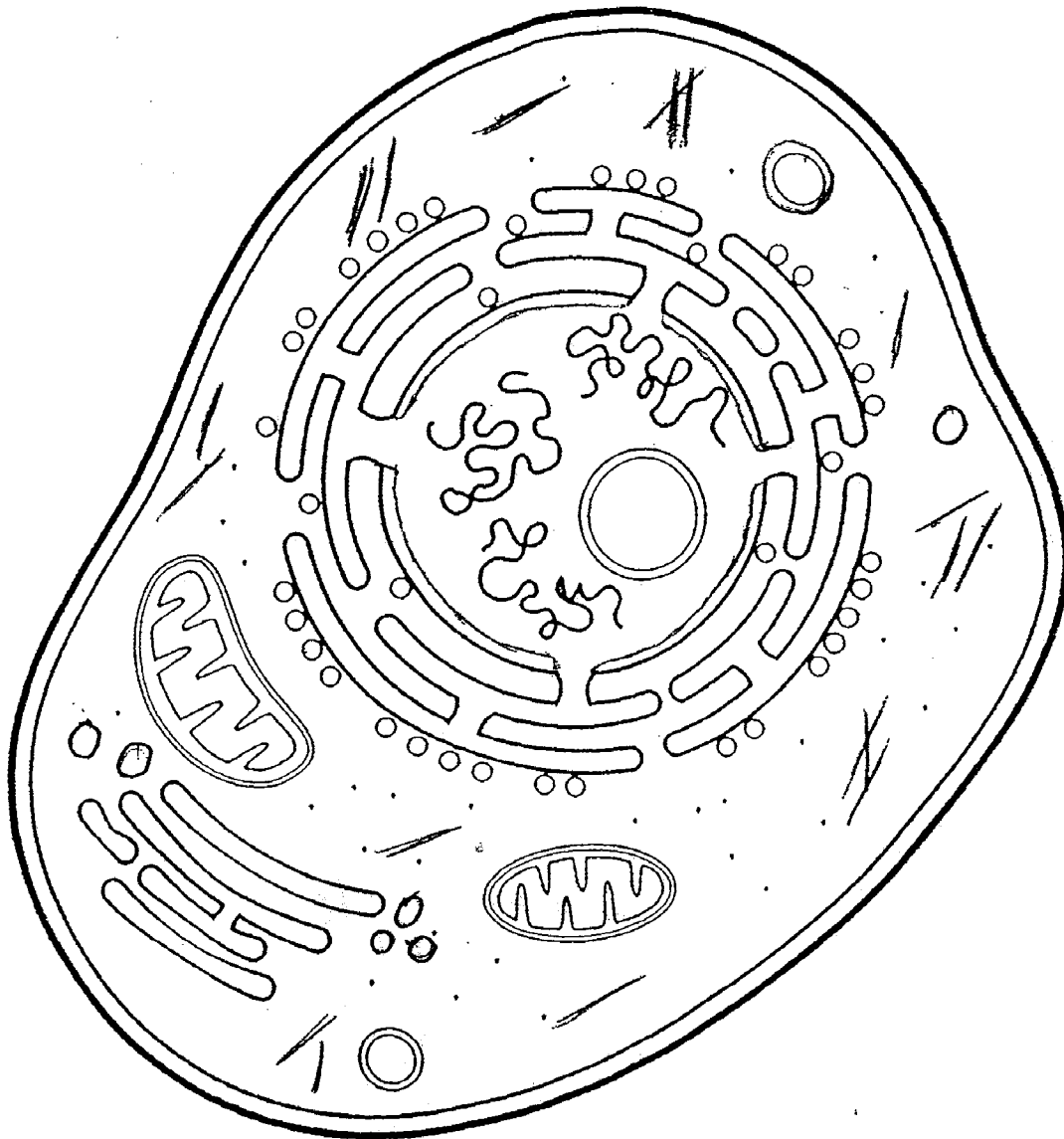


NAME \_\_\_\_\_

DATE: \_\_\_\_\_

CELL TYPE: \_\_\_\_\_  
(PLANT or ANIMAL)

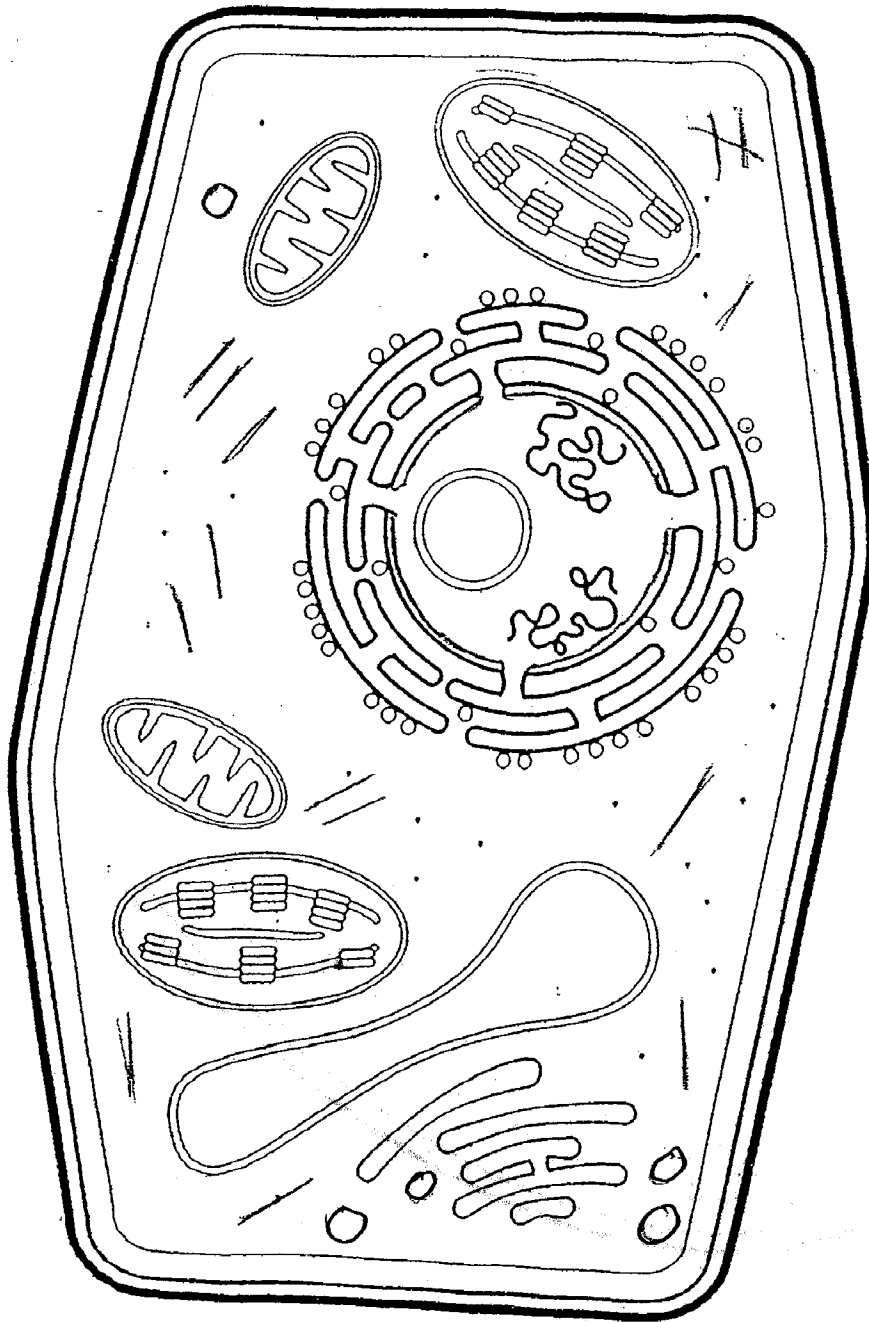


Directions: Color the cell parts according to the key below. Then label the parts with the name and nickname.

cell membrane	light purple	chloroplast	dark green
cell wall	brown	Golgi bodies (complex)	pink
nuclear membrane	dark red	lysosomes	yellow
nucleolus	dark purple	vacuole/ vesicle	blue-green
endoplasmic reticulum	orange	ribosomes	black
cytoplasm	very light blue	mitochondria	dark blue

Note: You will not use every part in the animal cell.

CELL  
TYPE: \_\_\_\_\_  
(PLANT OR ANIMAL)



Directions: Color the cell parts according to the key below. Then label the parts with the name and nickname.

cell membrane	light purple	chloroplast	dark green
cell wall	brown	Golgi bodies (complex)	pink
nuclear membrane	dark red	lysosomes	yellow
nucleolus	dark purple	vacuole/ vesicle	blue-green
endoplasmic reticulum	orange	ribosomes	black
cytoplasm	very light blue	mitochondria	dark blue

NOTE! You will NOT use every part in the plant cell.